

Boleskine Rd between Harriet Rd and Douglas St

October 21, 2019 To October 25, 2019



The data presented here is for information purposes only and should not be considered authoritative for construction, geotechnical, engineering, navigational, legal, or other site-specific uses. The information shared is owned by the Transportation Division of the Engineering Department at the District of Saanich. Accuracy is not guaranteed.

Start Date: 21-Oct-19
 Start Time: 0:00
 Station ID: M0003-01

Location 1: Boleskine Rd between Harriet Rd and Douglas St

Note:

DATE:	October 21, 2019		October 22, 2019		October 23, 2019		October 24, 2019		October 25, 2019		WK AVG		WK AVG	HOURLY
	MON		TUE		WED		THURS		FRI				CH 1+2	%
Time:	EB	WB	EB	WB	EB	WB	EB	WB	EB	WB	EB	WB		
12-1 AM			34	43	44	62	37	41			38	49	87	0.6%
1-2 AM			18	28	24	34	16	26			19	29	49	0.3%
2-3 AM			21	23	21	26	10	22			17	24	41	0.3%
3-4 AM			15	5	17	15	10	14			14	11	25	0.2%
4-5 AM			33	15	30	21	32	15			32	17	49	0.3%
5-6 AM			75	45	85	43	81	41			80	43	123	0.8%
6-7 AM			254	156	248	135	245	132			249	141	390	2.6%
7-8 AM			540	253	554	293	580	278			558	275	833	5.5%
8-9 AM			673	330	720	361	728	333			707	341	1048	6.9%
9-10 AM			524	293	530	328	498	320			517	314	831	5.5%
10-11 AM			466	331	458	361	450	337			458	343	801	5.3%
11-12 PM			453	431	502	449	511	440			489	440	929	6.1%
12-1 PM			567	456	520	467	517	443			535	455	990	6.5%
1-2 PM			529	421	561	439	513	455			534	438	973	6.4%
2-3 PM			480	496	552	496	518	495			517	496	1012	6.7%
3-4 PM			549	692	623	682	545	656			572	677	1249	8.2%
4-5 PM			578	881	584	870	607	905			590	885	1475	9.7%
5-6 PM			604	777	472	748	511	792			529	772	1301	8.6%
6-7 PM			436	513	378	503	421	500			412	505	917	6.0%
7-8 PM			267	353	318	359	326	364			304	359	662	4.4%
8-9 PM			227	314	233	315	261	289			240	306	546	3.6%
9-10 PM			212	230	165	263	170	233			182	242	424	2.8%
10-11 PM			93	157	123	199	113	154			110	170	280	1.8%
11-12 AM			49	98	55	95	74	110			59	101	160	1.1%
LANES			7697	7341	7817	7564	7774	7395			7763	7433	15196	100.0%
TOTAL			15038		15381		15169				15200			
	MON		TUE		WED		THURS		FRI		WK AVG			

PEAK HOUR					TOTAL VEHICALS-PEAK PERIODS		2 HOUR PEAK INTERVALS						
MAX. 7 - 9 am PEAK HOUR	1048	⇒	6.9%	between	8-9 AM	6576	⇒	6 HR TOTAL	2 HR AM (7 - 9 AM)				
MAX. 7 - 11 am PEAK HOUR	1048	⇒	6.9%	between	8-9 AM	4657	⇒	4 HR TOTAL	VEH / HR	VEH / 2HR	2 HR %		
									7-8 AM	833	1881	12.4%	
									8-9 AM	1048			
MAX. 11 am - 1 pm PEAK HOUR	990	⇒	6.5%	between	12-1 PM				2 HR NOON (11 - 1 PM)				
MAX. 11 am - 3 pm PEAK HOUR	1012	⇒	6.7%	between	2-3 PM				VEH / HR	VEH / 2HR	2 HR %		
									11-12 PM	929	1919	12.6%	
									12-1 PM	990			
MAX. 4 - 6 pm PEAK HOUR	1475	⇒	9.7%	between	4-5 PM				2 HR PM (4 - 6 PM)				
MAX. 3 - 6 pm PEAK HOUR	1475	⇒	9.7%	between	4-5 PM				VEH / HR	VEH / 2HR	2 HR %		
									4-5 PM	1475	2776	18.3%	
									5-6 PM	1301			

Boleskine Rd between Harriet Rd and Douglas St

Westbound

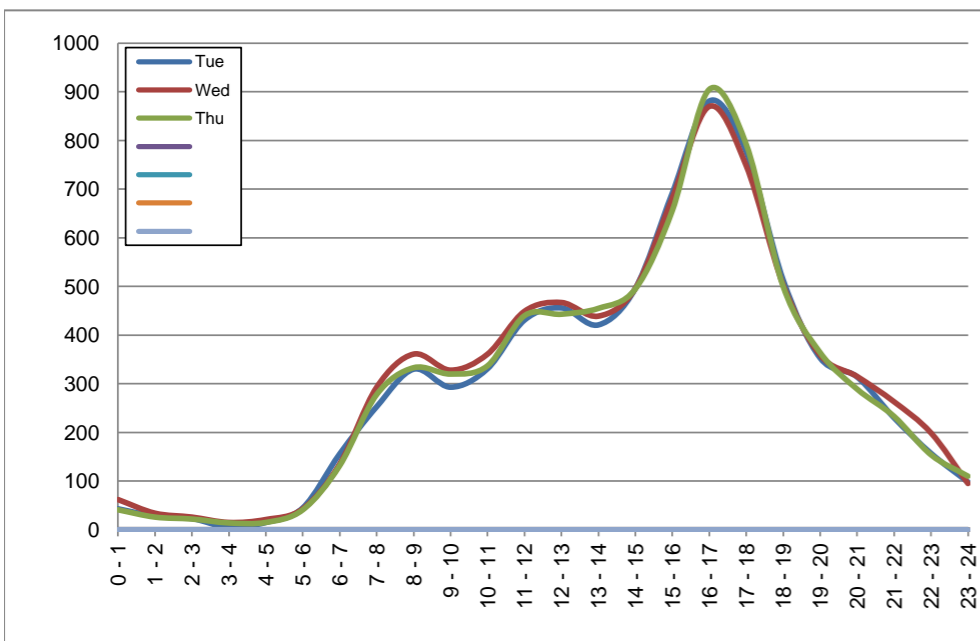
October 22, 2019 to October 24, 2019

Hourly Volumes

Time Period	Tue	Wed	Thu			
	Oct 22	Oct 23	Oct 24			
0 - 1	43	62	41			
1 - 2	28	34	26			
2 - 3	23	26	22			
3 - 4	5	15	14			
4 - 5	15	21	15			
5 - 6	45	43	41			
6 - 7	156	135	132			
7 - 8	253	293	278			
8 - 9	330	361	333			
9 - 10	293	328	320			
10 - 11	331	361	337			
11 - 12	431	449	440			
12 - 13	456	467	443			
13 - 14	421	439	455			
14 - 15	496	496	495			
15 - 16	692	682	656			
16 - 17	881	870	905			
17 - 18	777	748	792			
18 - 19	513	503	500			
19 - 20	353	359	364			
20 - 21	314	315	289			
21 - 22	230	263	233			
22 - 23	157	199	154			
23 - 24	98	95	110			
Day Total	7341	7564	7395			

15-Minute Volumes

Time Start	Tue	Wed	Thu				Time Start	Tue	Wed	Thu			
	Oct 22	Oct 23	Oct 24					Oct 22	Oct 23	Oct 24			
0:00	10	20	9				12:00	102	126	108			
0:15	12	18	14				12:15	112	104	112			
0:30	8	16	6				12:30	112	109	106			
0:45	13	8	12				12:45	130	128	117			
1:00	12	10	10				13:00	100	108	113			
1:15	7	10	6				13:15	117	113	107			
1:30	5	7	10				13:30	99	105	123			
1:45	4	7	0				13:45	105	113	112			
2:00	7	8	6				14:00	116	120	139			
2:15	2	8	6				14:15	129	125	106			
2:30	11	6	9				14:30	123	113	135			
2:45	3	4	1				14:45	128	138	115			
3:00	1	6	1				15:00	144	167	134			
3:15	3	2	6				15:15	171	162	173			
3:30	0	2	3				15:30	187	169	171			
3:45	1	5	4				15:45	190	184	178			
4:00	2	6	1				16:00	227	221	220			
4:15	5	4	1				16:15	202	211	216			
4:30	3	5	3				16:30	234	218	226			
4:45	5	6	10				16:45	218	220	243			
5:00	9	5	4				17:00	215	246	238			
5:15	11	12	9				17:15	187	192	210			
5:30	11	12	13				17:30	214	154	209			
5:45	14	14	15				17:45	161	156	135			
6:00	23	17	16				18:00	131	127	118			
6:15	31	26	23				18:15	131	126	154			
6:30	51	45	40				18:30	131	139	121			
6:45	51	47	53				18:45	120	111	107			
7:00	56	57	49				19:00	99	89	109			
7:15	55	67	76				19:15	86	83	87			
7:30	74	86	73				19:30	90	95	78			
7:45	68	83	80				19:45	78	92	90			
8:00	77	83	83				20:00	71	72	91			
8:15	87	82	77				20:15	76	86	74			
8:30	76	97	86				20:30	94	79	55			
8:45	90	99	87				20:45	73	78	69			
9:00	81	101	87				21:00	56	69	69			
9:15	70	76	76				21:15	74	88	58			
9:30	69	72	77				21:30	51	53	53			
9:45	73	79	80				21:45	49	53	53			
10:00	78	77	90				22:00	49	64	46			
10:15	81	79	80				22:15	41	54	38			
10:30	84	106	76				22:30	36	45	29			
10:45	88	99	91				22:45	31	36	41			
11:00	90	95	93				23:00	34	37	40			
11:15	118	98	105				23:15	26	24	31			
11:30	109	125	106				23:30	17	16	16			
11:45	114	131	136				23:45	21	18	23			



Site notes:

Boleskine Rd between Harriet Rd and Douglas St

Eastbound

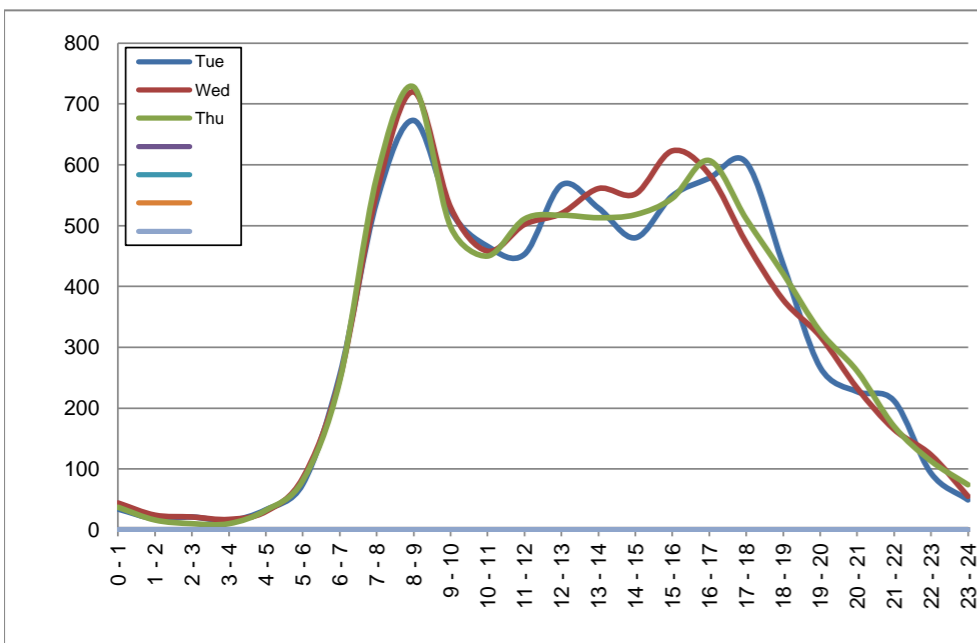
October 22, 2019 to October 24, 2019

Hourly Volumes

Time Period	Tue	Wed	Thu			
	Oct 22	Oct 23	Oct 24			
0 - 1	34	44	37			
1 - 2	18	24	16			
2 - 3	21	21	10			
3 - 4	15	17	10			
4 - 5	33	30	32			
5 - 6	75	85	81			
6 - 7	254	248	245			
7 - 8	540	554	580			
8 - 9	673	720	728			
9 - 10	524	530	498			
10 - 11	466	458	450			
11 - 12	453	502	511			
12 - 13	567	520	517			
13 - 14	529	561	513			
14 - 15	480	552	518			
15 - 16	549	623	545			
16 - 17	578	584	607			
17 - 18	604	472	511			
18 - 19	436	378	421			
19 - 20	267	318	326			
20 - 21	227	233	261			
21 - 22	212	165	170			
22 - 23	93	123	113			
23 - 24	49	55	74			
Day Total	7697	7817	7774			

15-Minute Volumes

Time Start	Tue	Wed	Thu				Time Start	Tue	Wed	Thu			
	Oct 22	Oct 23	Oct 24					Oct 22	Oct 23	Oct 24			
0:00	9	12	11				12:00	144	138	120			
0:15	11	13	9				12:15	136	134	123			
0:30	8	13	10				12:30	131	114	118			
0:45	6	6	7				12:45	156	134	156			
1:00	8	11	6				13:00	153	152	117			
1:15	6	5	3				13:15	119	121	133			
1:30	3	1	4				13:30	117	152	138			
1:45	1	7	3				13:45	140	136	125			
2:00	9	6	0				14:00	130	128	128			
2:15	3	2	2				14:15	106	143	117			
2:30	6	6	5				14:30	125	124	135			
2:45	3	7	3				14:45	119	157	138			
3:00	5	4	3				15:00	128	157	112			
3:15	4	3	2				15:15	140	166	138			
3:30	4	6	3				15:30	155	146	146			
3:45	2	4	2				15:45	126	154	149			
4:00	7	5	3				16:00	145	146	147			
4:15	5	3	3				16:15	138	142	142			
4:30	11	11	12				16:30	149	154	163			
4:45	10	11	14				16:45	146	142	155			
5:00	7	8	11				17:00	164	135	147			
5:15	13	18	15				17:15	154	123	131			
5:30	20	24	17				17:30	148	120	117			
5:45	35	35	38				17:45	138	94	116			
6:00	41	39	36				18:00	129	103	103			
6:15	54	49	53				18:15	115	80	121			
6:30	77	70	61				18:30	97	103	104			
6:45	82	90	95				18:45	95	92	93			
7:00	97	80	117				19:00	75	121	89			
7:15	110	124	108				19:15	70	77	85			
7:30	142	157	165				19:30	59	68	76			
7:45	191	193	190				19:45	63	52	76			
8:00	181	178	180				20:00	58	71	84			
8:15	173	175	191				20:15	48	62	62			
8:30	167	180	168				20:30	61	55	63			
8:45	152	187	189				20:45	60	45	52			
9:00	155	143	140				21:00	59	57	48			
9:15	124	130	124				21:15	57	33	39			
9:30	119	124	127				21:30	46	36	38			
9:45	126	133	107				21:45	50	39	45			
10:00	128	119	115				22:00	32	43	28			
10:15	94	118	115				22:15	17	27	30			
10:30	121	97	105				22:30	18	22	28			
10:45	123	124	115				22:45	26	31	27			
11:00	115	121	113				23:00	20	14	16			
11:15	105	126	116				23:15	11	14	18			
11:30	111	132	143				23:30	6	15	20			
11:45	122	123	139				23:45	12	12	20			



Site notes:

Vehicle Speed Summary

Saanich Engineering Department

Count Id: [M0003-01](#)

Filename: [Boleskine Rd between Harriet Rd and Douglas St-Oct-2019.xlsm](#)

Location: Boleskine Rd between Harriet Rd and Douglas St

Note:

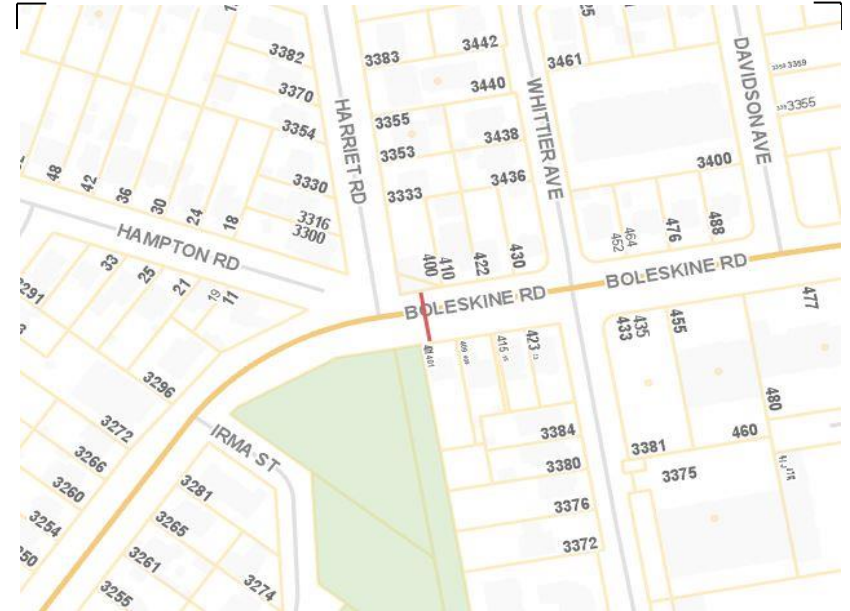
Direction: **East-West**

Dates: **October 21, 2019 To October 25, 2019**

Filtered data

AVG. SPEED	26 mph	41 km/h
50 % SPEED	27 mph	43 km/h
85 % SPEED	32 mph	51 km/h
95 % SPEED	34 mph	55 km/h

Location Map



Boleskine Rd between Harriet Rd and Douglas St

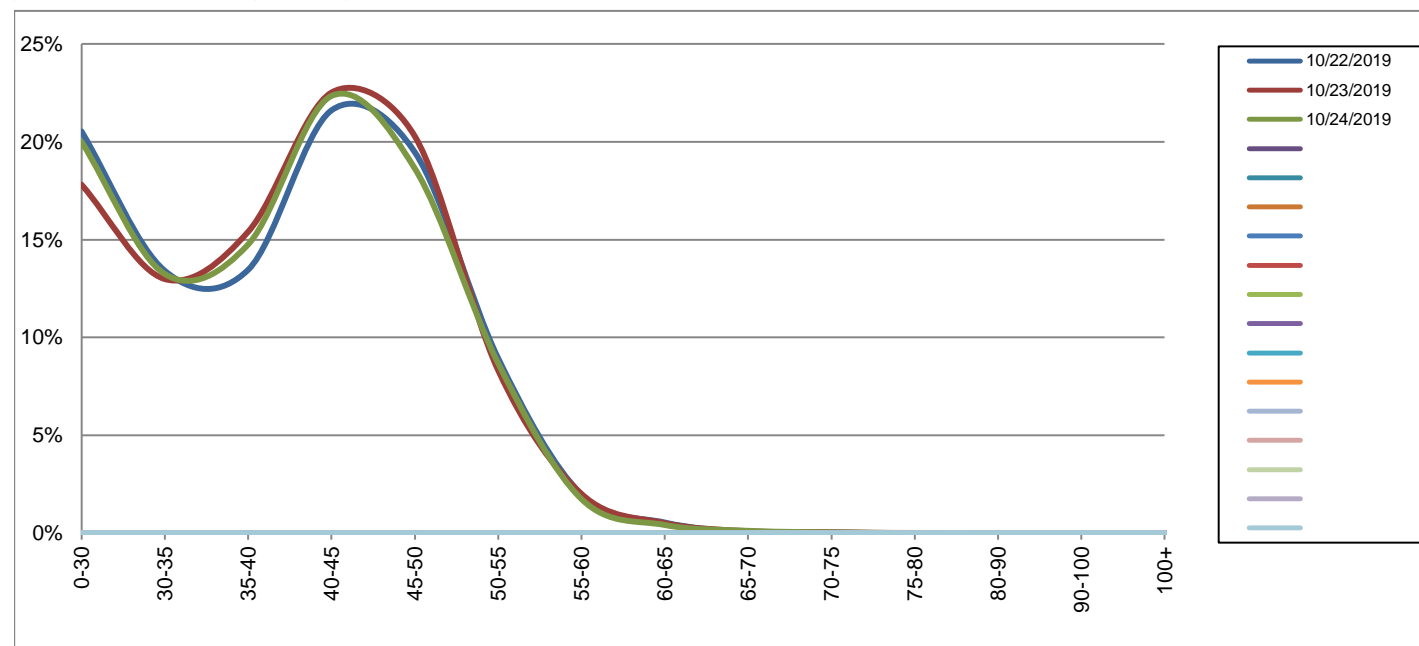
Westbound

October 22, 2019 to October 24, 2019

Daily Speed Bin Percentages															Daily Speed Bin Volumes														Total	Avg.
Bin #	1	2	3	4	5	6	7	8	9	10	11	12	13	14	1	2	3	4	5	6	7	8	9	10	11	12	13	14	Volume	Speed
Bin Speeds	0-30	30-35	35-40	40-45	45-50	50-55	55-60	60-65	65-70	70-75	75-80	80-90	90-100	100+	0-30	30-35	35-40	40-45	45-50	50-55	55-60	60-65	65-70	70-75	75-80	80-90	90-100	100+		
10/22/2019	20.5%	13.4%	13.5%	21.6%	19.5%	8.9%	2.0%	0.5%	0.1%	0.0%	0.0%	0.0%	0.0%	0.0%	1507	984	988	1586	1429	656	145	40	4	2	0	0	0	0	7341	37
10/23/2019	17.8%	13.0%	15.4%	22.5%	20.3%	8.3%	2.0%	0.5%	0.1%	0.1%	0.0%	0.0%	0.0%	0.0%	1347	982	1165	1703	1534	630	152	39	8	4	0	0	0	0	7564	38
10/24/2019	20.0%	13.2%	14.8%	22.3%	18.6%	8.7%	1.7%	0.4%	0.1%	0.0%	0.0%	0.0%	0.0%	0.0%	1479	979	1091	1652	1378	642	129	31	9	3	1	1	0	0	7395	37
Total	19.4%	13.2%	14.5%	22.2%	19.5%	8.6%	1.9%	0.5%	0.1%	0.0%	0.0%	0.0%	0.0%	0.0%	4333	2945	3244	4941	4341	1928	426	110	21	9	1	1	0	0	22300	37

Speed Data Summary

Bin #	1	2	3	4	5	6	7	8	9	10	11	12	13	14	Total
Bin Speeds	0-30	30-35	35-40	40-45	45-50	50-55	55-60	60-65	65-70	70-75	75-80	80-90	90-100	100+	
Survey Total	4333	2945	3244	4941	4341	1928	426	110	21	9	1	1	0	0	22300
% Total	19.4%	13.2%	14.5%	22.2%	19.5%	8.6%	1.9%	0.5%	0.1%	0.0%	0.0%	0.0%	0.0%	0.0%	100%
Accumulated %	19.4%	32.6%	47.2%	69.3%	88.8%	97.5%	99.4%	99.9%	100.0%	100.0%	100.0%	100.0%	100.0%	100%	
Inverse Accum. %	80.6%	67.4%	52.8%	30.7%	11.2%	2.5%	0.6%	0.1%	0.0%	0.0%	0.0%	0.0%	0.0%	0.0%	
Average Speed	37 KM/H														



Site notes:

Boleskine Rd between Harriet Rd and Douglas St

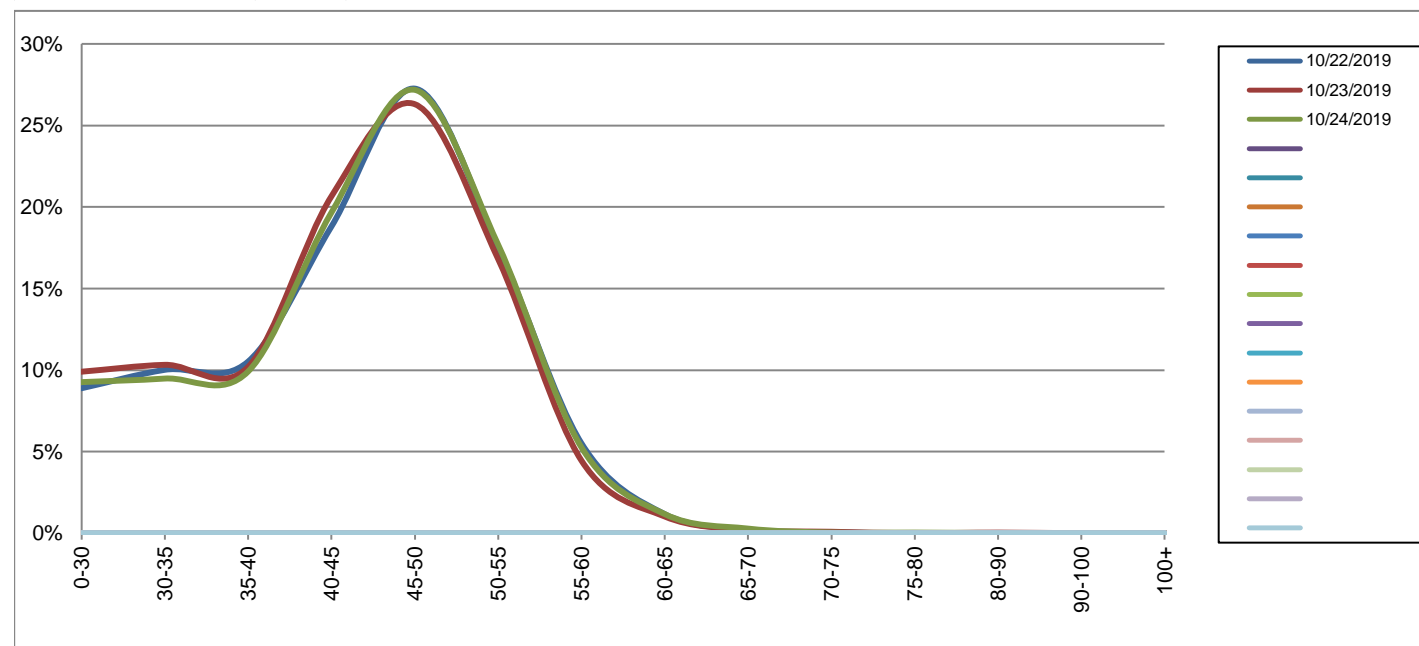
Eastbound

October 22, 2019 to October 24, 2019

Daily Speed Bin Percentages															Daily Speed Bin Volumes														Total	Avg.
Bin #	1	2	3	4	5	6	7	8	9	10	11	12	13	14	1	2	3	4	5	6	7	8	9	10	11	12	13	14	Volume	Speed
Bin Speeds	0-30	30-35	35-40	40-45	45-50	50-55	55-60	60-65	65-70	70-75	75-80	80-90	90-100	100+	0-30	30-35	35-40	40-45	45-50	50-55	55-60	60-65	65-70	70-75	75-80	80-90	90-100	100+		
10/22/2019	8.9%	10.0%	10.5%	18.8%	27.3%	17.6%	5.5%	1.2%	0.2%	0.1%	0.0%	0.0%	0.0%	0.0%	684	771	810	1448	2098	1351	424	90	16	4	0	1	0	0	7697	43
10/23/2019	9.9%	10.3%	10.2%	20.7%	26.3%	16.8%	4.5%	1.0%	0.2%	0.1%	0.0%	0.0%	0.0%	0.0%	774	807	797	1615	2056	1314	348	80	16	7	0	3	0	0	7817	42
10/24/2019	9.3%	9.5%	9.9%	19.7%	27.2%	17.7%	5.3%	1.2%	0.3%	0.0%	0.0%	0.0%	0.0%	0.0%	720	737	771	1529	2113	1375	409	91	22	3	3	1	0	0	7774	43
Total	9.4%	9.9%	10.2%	19.7%	26.9%	17.3%	5.1%	1.1%	0.2%	0.1%	0.0%	0.0%	0.0%	0.0%	2178	2315	2378	4592	6267	4040	1181	261	54	14	3	5	0	0	23288	43

Speed Data Summary

Bin #	1	2	3	4	5	6	7	8	9	10	11	12	13	14	Total
Bin Speeds	0-30	30-35	35-40	40-45	45-50	50-55	55-60	60-65	65-70	70-75	75-80	80-90	90-100	100+	
Survey Total	2178	2315	2378	4592	6267	4040	1181	261	54	14	3	5	0	0	23288
% Total	9.4%	9.9%	10.2%	19.7%	26.9%	17.3%	5.1%	1.1%	0.2%	0.1%	0.0%	0.0%	0.0%	0.0%	100%
Accumulated %	9.4%	19.3%	29.5%	49.2%	76.1%	93.5%	98.6%	99.7%	99.9%	100.0%	100.0%	100.0%	100.0%	100%	
Inverse Accum. %	90.6%	80.7%	70.5%	50.8%	23.9%	6.5%	1.4%	0.3%	0.1%	0.0%	0.0%	0.0%	0.0%	0.0%	
Average Speed	43 KM/H														



Site notes:

Boleskine Rd between Harriet Rd and Douglas St

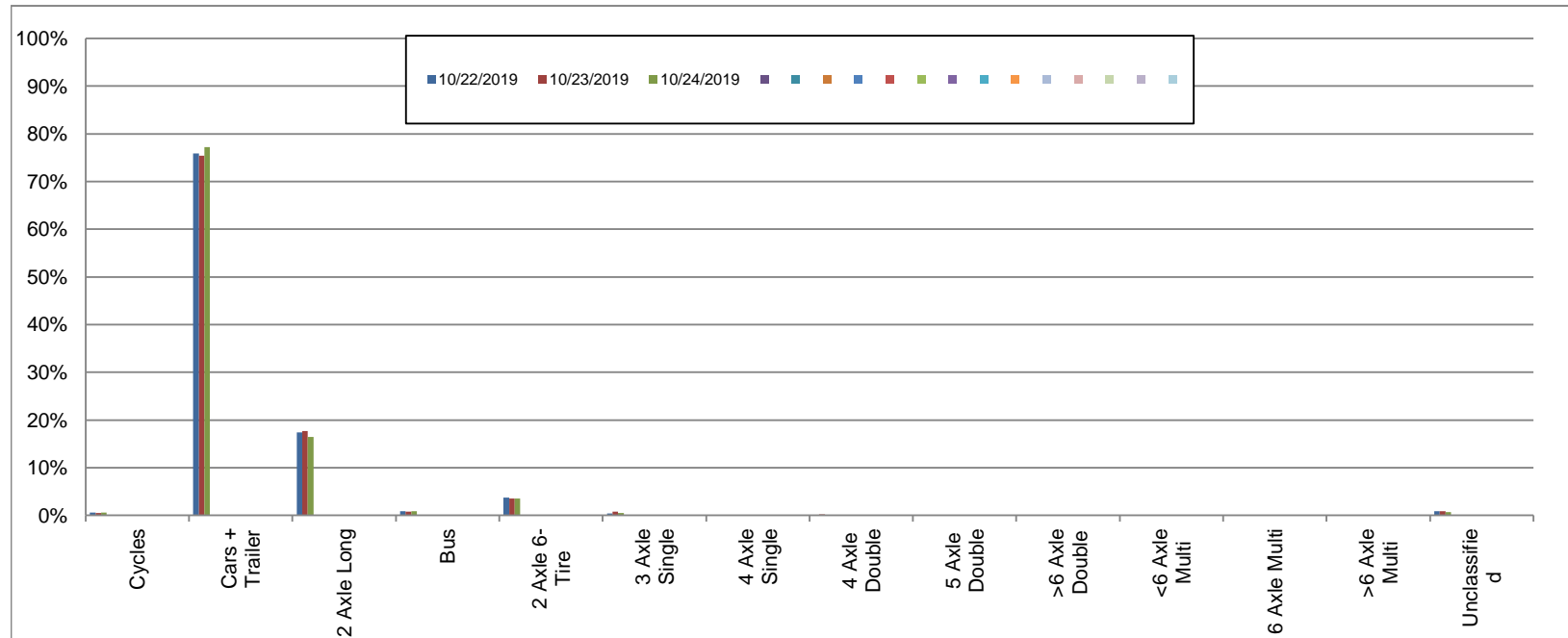
Westbound

October 22, 2019 to October 24, 2019

Daily Class Bin Percentages															Daily Class Bin Volumes														
Bin #	1	2	3	4	5	6	7	8	9	10	11	12	13	14	1	2	3	4	5	6	7	8	9	10	11	12	13	14	Total Volume
Bin Class	Cycles	Cars + Trailer	2 Axle Long	Bus	2 Axle 6-Tire	3 Axle Single	4 Axle Single	4 Axle Double	5 Axle Double	>6 Axle Double	<6 Axle Multi	6 Axle Multi	>6 Axle Multi	Unclassified	Cycles	Cars + Trailer	2 Axle Long	Bus	2 Axle 6-Tire	3 Axle Single	4 Axle Single	4 Axle Double	5 Axle Double	>6 Axle Double	<6 Axle Multi	6 Axle Multi	>6 Axle Multi	Unclassified	
10/22/2019	0.6%	75.9%	17.4%	0.8%	3.7%	0.4%	0.1%	0.0%	0.0%	0.1%	0.0%	0.0%	0.0%	0.9%	45	5570	1280	61	274	29	4	2	3	8	0	0	0	65	7341
10/23/2019	0.5%	75.4%	17.7%	0.8%	3.6%	0.8%	0.0%	0.2%	0.1%	0.1%	0.0%	0.0%	0.0%	0.9%	40	5706	1337	62	270	59	2	13	4	5	0	0	0	66	7564
10/24/2019	0.6%	77.2%	16.4%	0.9%	3.5%	0.5%	0.0%	0.1%	0.0%	0.0%	0.0%	0.0%	0.0%	0.6%	44	5709	1216	67	261	36	2	6	3	3	0	0	0	48	7395
Total	0.6%	76.2%	17.2%	0.9%	3.6%	0.6%	0.0%	0.1%	0.0%	0.1%	0.0%	0.0%	0.0%	0.8%	129	16985	3833	190	805	124	8	21	10	16	0	0	0	179	22300

Class Data Summary

Bin #	1	2	3	4	5	6	7	8	9	10	11	12	13	14	Total Volume
Bin Class	Cycles	Cars + Trailer	2 Axle Long	Bus	2 Axle 6-Tire	3 Axle Single	4 Axle Single	4 Axle Double	5 Axle Double	>6 Axle Double	<6 Axle Multi	6 Axle Multi	>6 Axle Multi	Unclassified	Total Volume
Survey Total	129	16985	3833	190	805	124	8	21	10	16	0	0	0	179	22300
% Total	0.6%	76.2%	17.2%	0.9%	3.6%	0.6%	0.0%	0.1%	0.0%	0.1%	0.0%	0.0%	0.0%	0.8%	100%
Accumulated %	0.6%	76.7%	93.9%	94.8%	98.4%	99.0%	99.0%	99.1%	99.1%	99.2%	99.2%	99.2%	99.2%	100.0%	
Inv. Accum. %	99.4%	23.3%	6.1%	5.2%	1.6%	1.0%	1.0%	0.9%	0.9%	0.8%	0.8%	0.8%	0.8%	0.0%	



Classification Descriptions

Bin #	Bin Description
1	Motorcycles
2	Passenger cars, including those with recreational trailers
3	2-axle pick-ups, vans, and RVs, including those with recreational trailers
4	Buses
5	2-axle, 6-tire single units
6	3-axle single units
7	4-axle single units
8	3-axle or 4-axle double unit
9	5-axle double unit
10	6-, 7-, or 8-axle double unit
11	5-axle multiple unit
12	6-axle multiple unit
13	7-or-more-axle multiple unit
14	Vehicles that could not be classified

Site notes:

Boleskine Rd between Harriet Rd and Douglas St

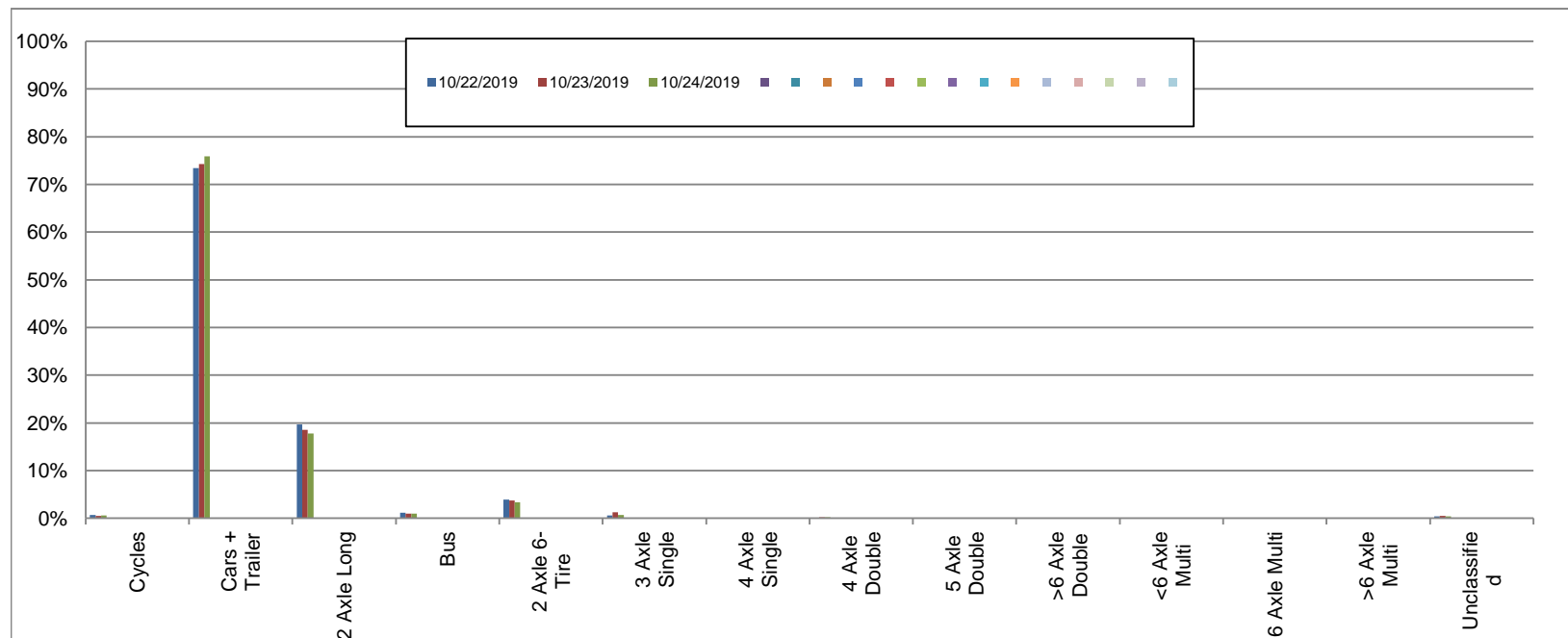
Eastbound

October 22, 2019 to October 24, 2019

Daily Class Bin Percentages															Daily Class Bin Volumes														
Bin #	1	2	3	4	5	6	7	8	9	10	11	12	13	14	1	2	3	4	5	6	7	8	9	10	11	12	13	14	Total Volume
Bin Class	Cycles	Cars + Trailer	2 Axle Long	Bus	2 Axle 6-Tire	3 Axle Single	4 Axle Single	4 Axle Double	5 Axle Double	>6 Axle Double	<6 Axle Multi	6 Axle Multi	>6 Axle Multi	Unclassified	Cycles	Cars + Trailer	2 Axle Long	Bus	2 Axle 6-Tire	3 Axle Single	4 Axle Single	4 Axle Double	5 Axle Double	>6 Axle Double	<6 Axle Multi	6 Axle Multi	>6 Axle Multi	Unclassified	
10/22/2019	0.6%	73.4%	19.7%	1.1%	3.9%	0.5%	0.0%	0.1%	0.1%	0.1%	0.0%	0.0%	0.0%	0.4%	50	5653	1514	86	304	42	3	8	5	5	0	0	0	27	7697
10/23/2019	0.5%	74.3%	18.6%	0.9%	3.7%	1.2%	0.0%	0.2%	0.1%	0.0%	0.0%	0.0%	0.0%	0.5%	38	5806	1452	73	289	97	1	15	4	1	0	0	0	41	7817
10/24/2019	0.6%	75.9%	17.8%	0.9%	3.4%	0.7%	0.0%	0.2%	0.1%	0.0%	0.0%	0.0%	0.0%	0.4%	47	5897	1385	72	263	53	0	17	5	3	0	0	0	32	7774
Total	0.6%	74.5%	18.7%	1.0%	3.7%	0.8%	0.0%	0.2%	0.1%	0.0%	0.0%	0.0%	0.0%	0.4%	135	17356	4351	231	856	192	4	40	14	9	0	0	0	100	23288

Class Data Summary

Bin #	1	2	3	4	5	6	7	8	9	10	11	12	13	14	Total Volume
Bin Class	Cycles	Cars + Trailer	2 Axle Long	Bus	2 Axle 6-Tire	3 Axle Single	4 Axle Single	4 Axle Double	5 Axle Double	>6 Axle Double	<6 Axle Multi	6 Axle Multi	>6 Axle Multi	Unclassified	Total Volume
Survey Total	135	17356	4351	231	856	192	4	40	14	9	0	0	0	100	23288
% Total	0.6%	74.5%	18.7%	1.0%	3.7%	0.8%	0.0%	0.2%	0.1%	0.0%	0.0%	0.0%	0.0%	0.4%	100%
Accumulated %	0.6%	75.1%	93.8%	94.8%	98.5%	99.3%	99.3%	99.5%	99.5%	99.6%	99.6%	99.6%	99.6%	100.0%	
Inv. Accum. %	99.4%	24.9%	6.2%	5.2%	1.5%	0.7%	0.7%	0.5%	0.5%	0.4%	0.4%	0.4%	0.4%	0.0%	



Classification Descriptions

Bin #	Bin Description
1	Motorcycles
2	Passenger cars, including those with recreational trailers
3	2-axle pick-ups, vans, and RVs, including those with recreational trailers
4	Buses
5	2-axle, 6-tire single units
6	3-axle single units
7	4-axle single units
8	3-axle or 4-axle double unit
9	5-axle double unit
10	6-, 7-, or 8-axle double unit
11	5-axle multiple unit
12	6-axle multiple unit
13	7-or-more-axle multiple unit
14	Vehicles that could not be classified

Site notes: